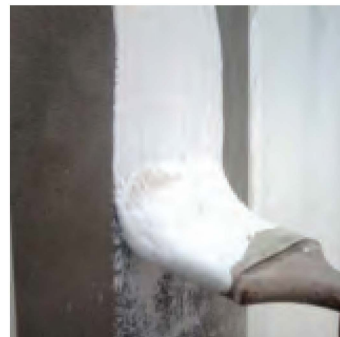


## Chelfix Latex 400

Primer for Decorative Render



**Product Description** Acrylic emulsion based single component, decorative coating and multi-purpose primer with high adhesion strength.

**Areas of Usage** Before applying decorative coating in Thermal Insulation systems, it is used as primer in interior and exterior facades.

### Features and Benefits

- Ready to use,
- Easy and fast to apply.
- Water based, odorless,
- It can be used safely in outdoor and indoors.
- High adhesion strength.
- High closure capability. Hardens the application surface.
- It is applied before cement and gypsum based coatings to prevent rapid water loss in mortar.
- Facilitates patterning during decorative coating application.
- It has high water impermeability due to the special polymers it contains.

### Application Instructions

**Surface Quality:** Surface should be solid, free of loose and weak parts, free from freezing, foreign materials and other pollutants such as cement grout, accumulated water, oil, grease, paraffin, coatings etc. must be removed and cleaned

**Surface Preparation:** The surface should be prepared by suitable mechanical preparation techniques such as high pressure water or abrasive equipment. All dust, loose and easily crumbly materials should be removed completely by brush and / or vacuum before application. Surface should be dry.

**Mixing:** Mix with a low-speed mixer in a clean container, free of any obstructive material, or in its package for at least 3 minutes..

Apply to the surface by brush, roller and spray.

### Application Notes / Restrictions

- It must be protected after application against adverse weather conditions such as direct sunlight, high air temperature (above +35°C), rain and frost. Hands should be cleaned thoroughly with water and detergent before the product is fully cured and hardened.
- The product may be irritating to the skin. Work clothes, protective gloves, masks and glasses must be used. Protective cream can also be applied before starting work. In case of grout contact with eyes, eyes should be washed immediately with warm water and consult a doctor.
- Do not add foreign substances.
- Pretesting is recommended for different applications.
- Care must be taken to ensure that the application surface is cured..
- Immediately after application, before hardened, the equipment should be cleaned with water.

## Technical Data

<b>General Information</b>	
Structure	Acrylic Emulsion
Color	White
Density	1,53 ( $\pm$ 0,03) kg/l
Shelf Life	12 months in unopened original packaging
Packaging	25 kg bucket
<b>Application Information</b>	
Consumption	0,200-0,400 gr/m <sup>2</sup>
Pot Life	~60 minutes (20° C)
Drying Time	1 -3 hours
PH	7-9